

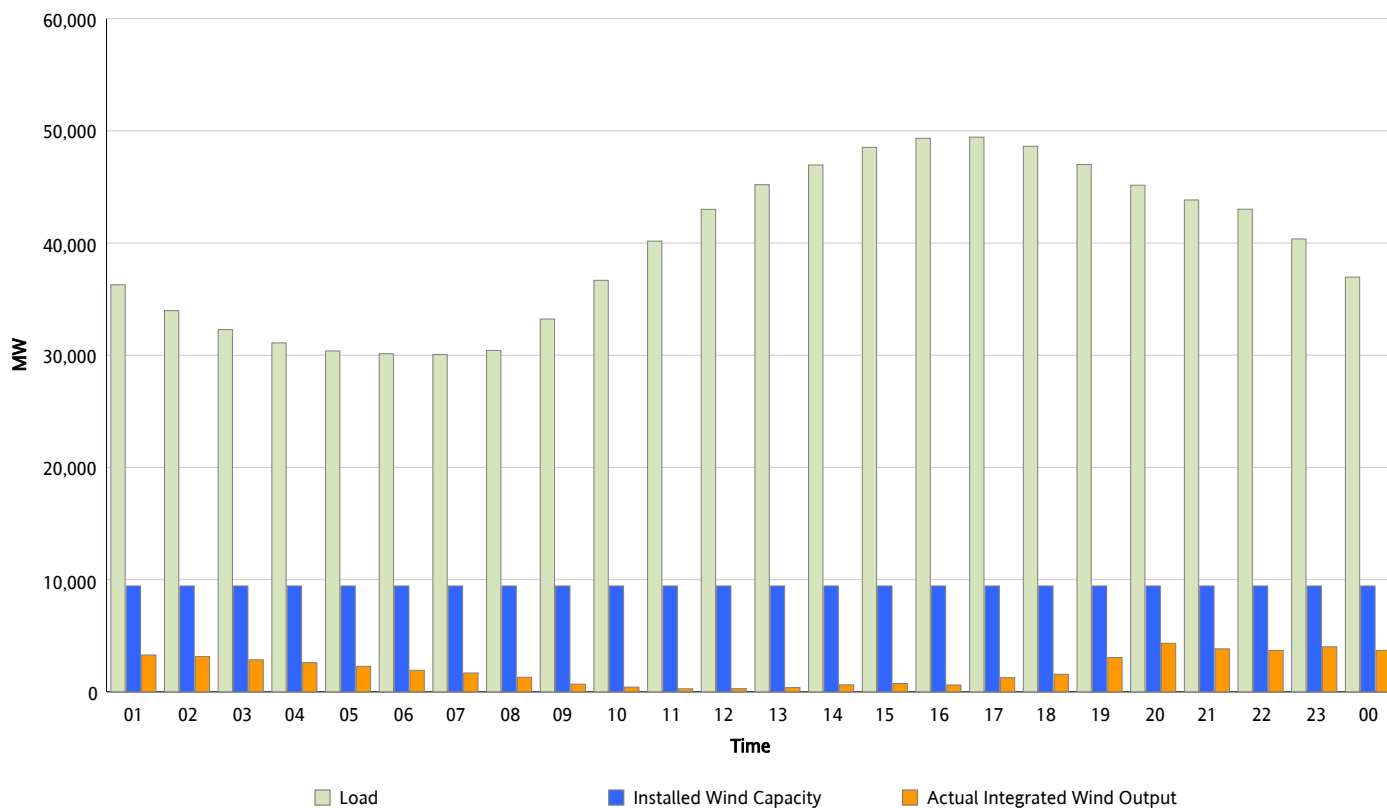


## ERCOT Grid Operations

### Wind Integration Report : 07/15/2012

Peak Load	49,439 MW
Load Peak Hour (HE)	17
Wind Over Peak	1,262 MW
Wind Record 06/19/12	8,368 MW
Max Wind Value*	4,683 MW
Wind Peak Time	19:48
Wind Integration %	10.52 %

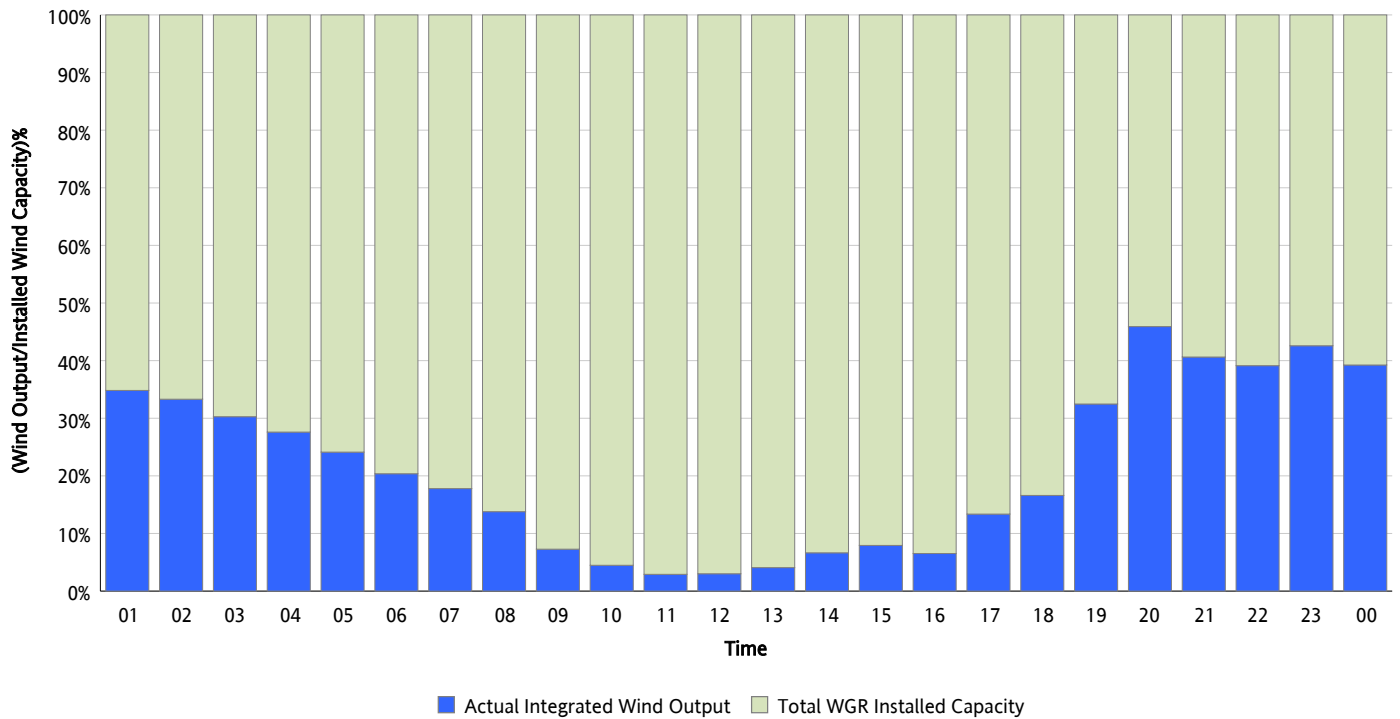
**Hourly Average Actual Load vs. Actual Wind Output**  
**07/15/2012**



\* Wind Record and Wind Max represent instantaneous values and the rest of the values are integrated over the hour

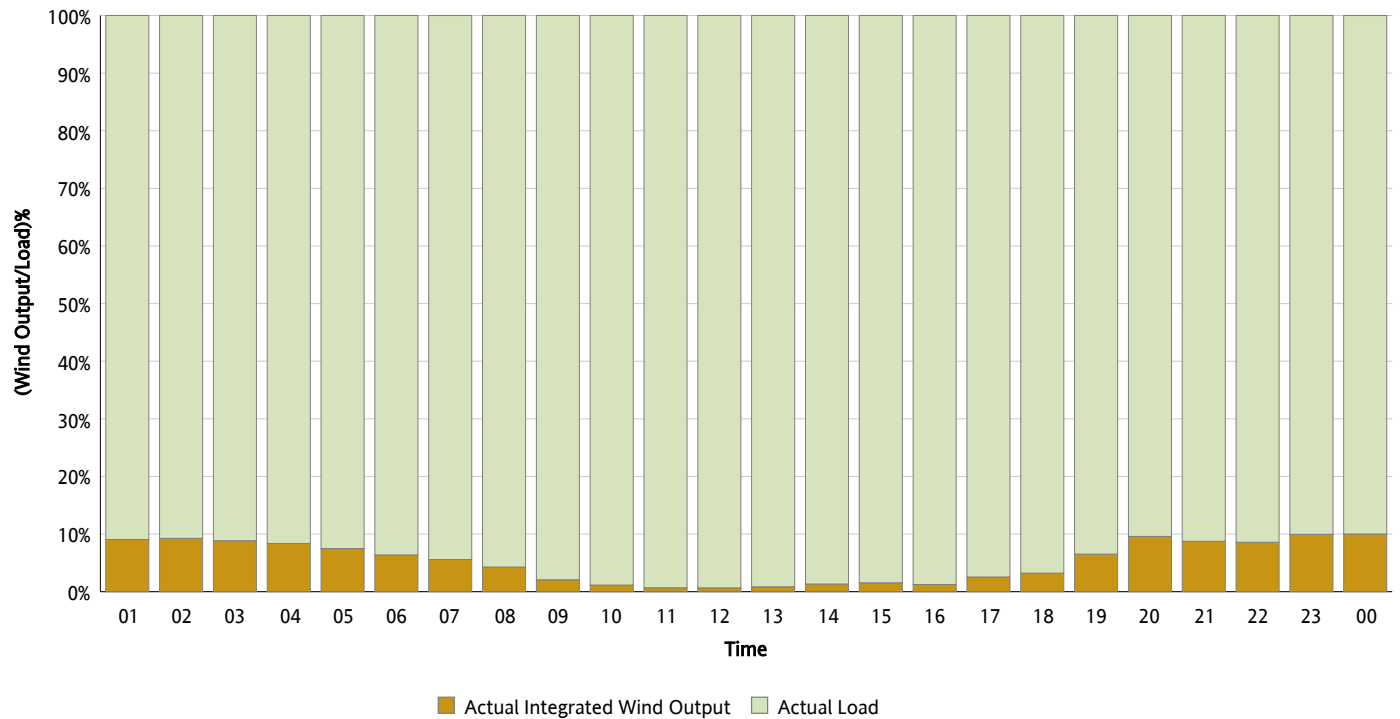
## Actual Wind Output as a Percentage of the Total Installed Wind Capacity

07/15/2012



## Actual Wind Output as a Percentage of the ERCOT Load

07/15/2012



## ERCOT Load vs. Actual Wind Output

07/08/2012 - 07/15/2012

